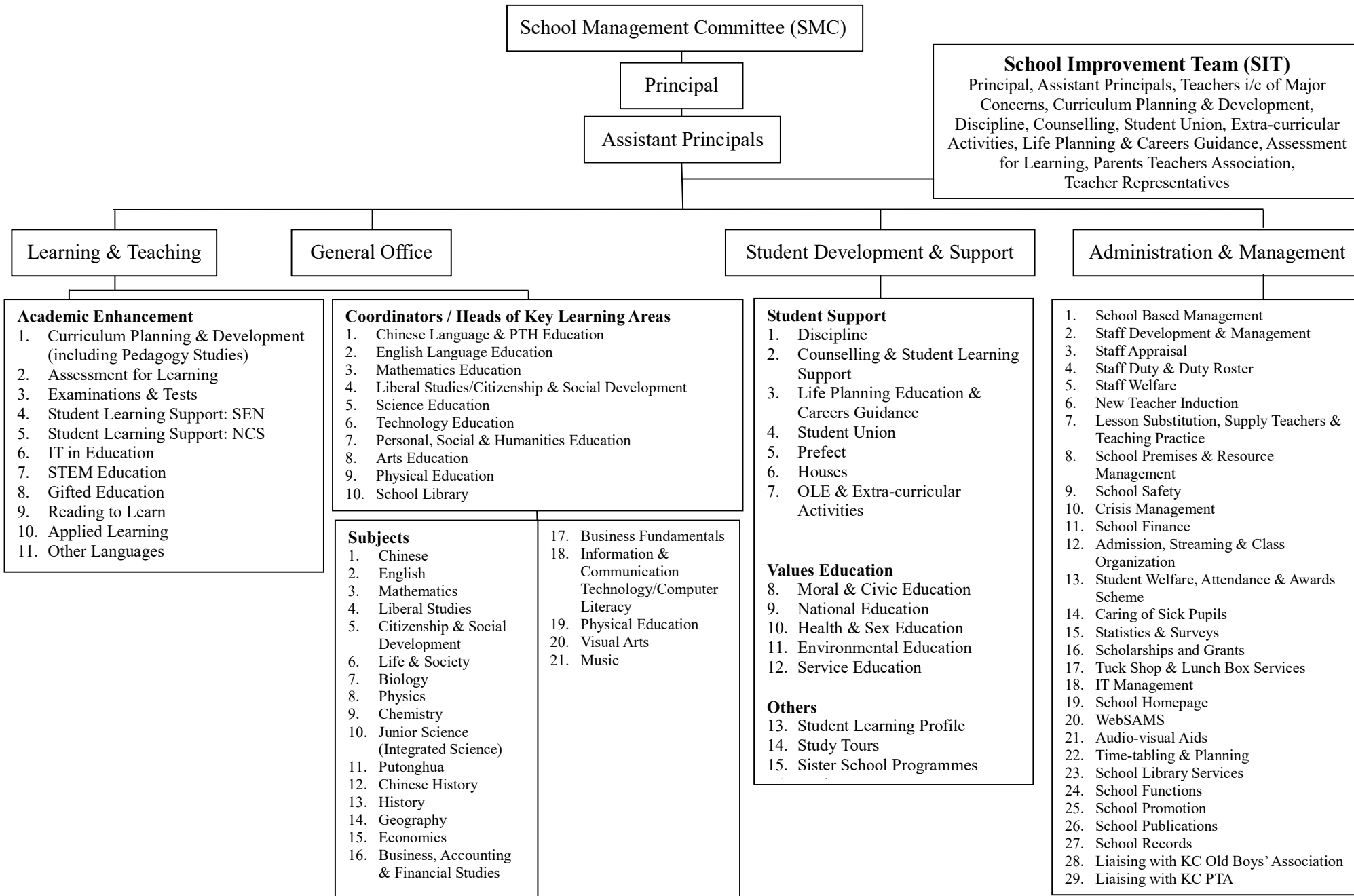


King's College
School Organization Chart 2022-2023



School Management Committee (SMC)

Principal

Assistant Principals

School Improvement Team (SIT)
Principal, Assistant Principals, Teachers i/c of Major Concerns, Curriculum Planning & Development, Discipline, Counselling, Student Union, Extra-curricular Activities, Life Planning & Careers Guidance, Assessment for Learning, Parents Teachers Association, Teacher Representatives

Learning & Teaching

General Office

Student Development & Support

Administration & Management

- Academic Enhancement**
1. Curriculum Planning & Development (including Pedagogy Studies)
 2. Assessment for Learning
 3. Examinations & Tests
 4. Student Learning Support: SEN
 5. Student Learning Support: NCS
 6. IT in Education
 7. STEM Education
 8. Gifted Education
 9. Reading to Learn
 10. Applied Learning
 11. Other Languages

- Coordinators / Heads of Key Learning Areas**
1. Chinese Language & PTH Education
 2. English Language Education
 3. Mathematics Education
 4. Liberal Studies/Citizenship & Social Development
 5. Science Education
 6. Technology Education
 7. Personal, Social & Humanities Education
 8. Arts Education
 9. Physical Education
 10. School Library

- Subjects**
- | | |
|--|---|
| <ol style="list-style-type: none"> 1. Chinese 2. English 3. Mathematics 4. Liberal Studies 5. Citizenship & Social Development 6. Life & Society 7. Biology 8. Physics 9. Chemistry 10. Junior Science (Integrated Science) 11. Putonghua 12. Chinese History 13. History 14. Geography 15. Economics 16. Business, Accounting & Financial Studies | <ol style="list-style-type: none"> 17. Business Fundamentals 18. Information & Communication Technology/Computer Literacy 19. Physical Education 20. Visual Arts 21. Music |
|--|---|

- Student Support**
1. Discipline
 2. Counselling & Student Learning Support
 3. Life Planning Education & Careers Guidance
 4. Student Union
 5. Prefect
 6. Houses
 7. OLE & Extra-curricular Activities
- Values Education**
8. Moral & Civic Education
 9. National Education
 10. Health & Sex Education
 11. Environmental Education
 12. Service Education
- Others**
13. Student Learning Profile
 14. Study Tours
 15. Sister School Programmes

1. School Based Management
2. Staff Development & Management
3. Staff Appraisal
4. Staff Duty & Duty Roster
5. Staff Welfare
6. New Teacher Induction
7. Lesson Substitution, Supply Teachers & Teaching Practice
8. School Premises & Resource Management
9. School Safety
10. Crisis Management
11. School Finance
12. Admission, Streaming & Class Organization
13. Student Welfare, Attendance & Awards Scheme
14. Caring of Sick Pupils
15. Statistics & Surveys
16. Scholarships and Grants
17. Tuck Shop & Lunch Box Services
18. IT Management
19. School Homepage
20. WeBSAMS
21. Audio-visual Aids
22. Time-tabling & Planning
23. School Library Services
24. School Functions
25. School Promotion
26. School Publications
27. School Records
28. Liaising with KC Old Boys' Association
29. Liaising with KC PTA