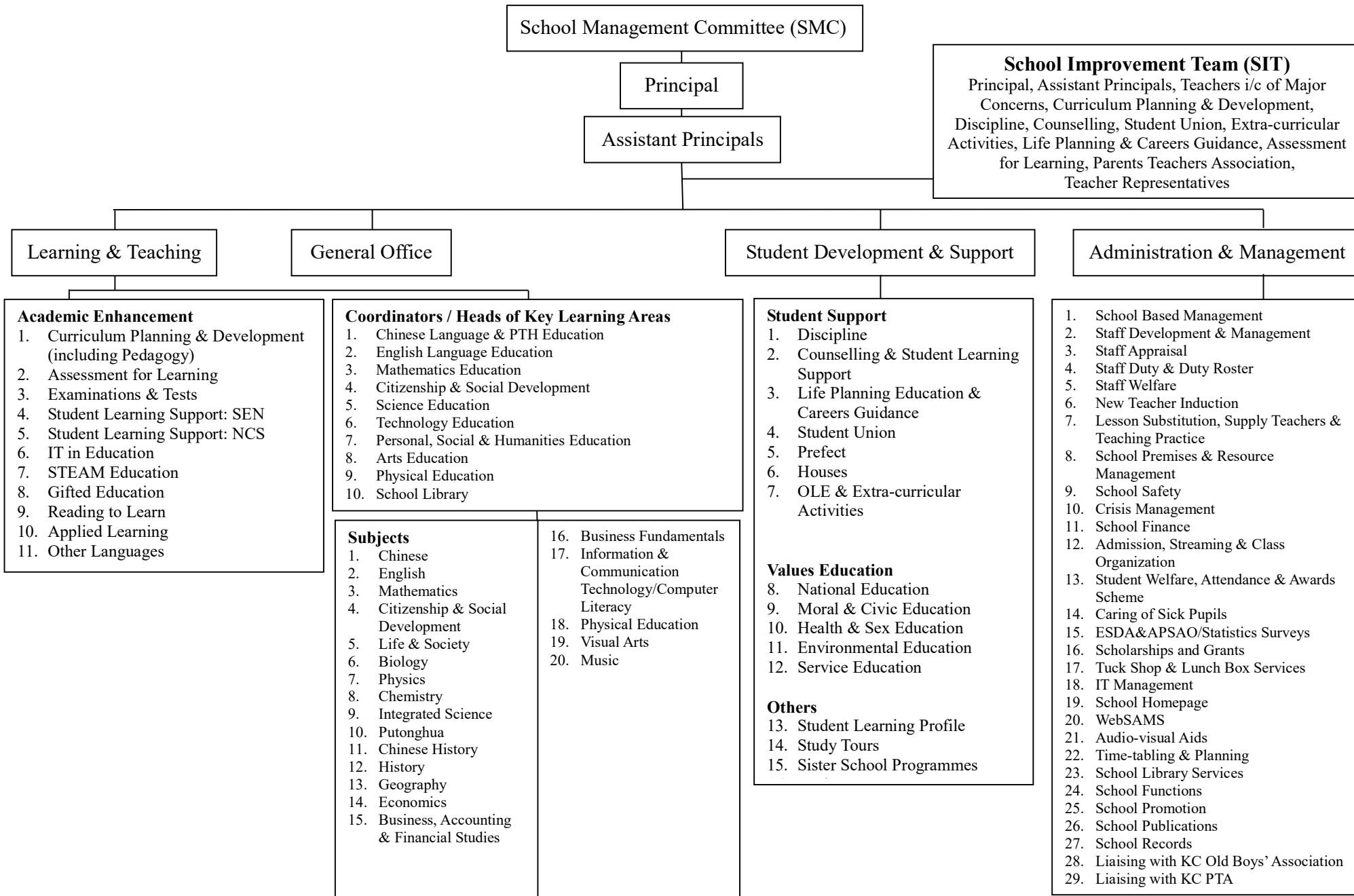


King's College
School Organization Chart 2023-2024



School Management Committee (SMC)

Principal

Assistant Principals

School Improvement Team (SIT)
Principal, Assistant Principals, Teachers i/c of Major Concerns, Curriculum Planning & Development, Discipline, Counselling, Student Union, Extra-curricular Activities, Life Planning & Careers Guidance, Assessment for Learning, Parents Teachers Association, Teacher Representatives

Learning & Teaching

General Office

Student Development & Support

Administration & Management

- Academic Enhancement**
- Curriculum Planning & Development (including Pedagogy)
 - Assessment for Learning
 - Examinations & Tests
 - Student Learning Support: SEN
 - Student Learning Support: NCS
 - IT in Education
 - STEAM Education
 - Gifted Education
 - Reading to Learn
 - Applied Learning
 - Other Languages

- Coordinators / Heads of Key Learning Areas**
- Chinese Language & PTH Education
 - English Language Education
 - Mathematics Education
 - Citizenship & Social Development
 - Science Education
 - Technology Education
 - Personal, Social & Humanities Education
 - Arts Education
 - Physical Education
 - School Library

- Subjects**
- | | |
|---|---|
| <ol style="list-style-type: none"> Chinese English Mathematics Citizenship & Social Development Life & Society Biology Physics Chemistry Integrated Science Putonghua Chinese History History Geography Economics Business, Accounting & Financial Studies | <ol style="list-style-type: none"> Business Fundamentals Information & Communication Technology/Computer Literacy Physical Education Visual Arts Music |
|---|---|

- Student Support**
- Discipline
 - Counselling & Student Learning Support
 - Life Planning Education & Careers Guidance
 - Student Union
 - Prefect
 - Houses
 - OLE & Extra-curricular Activities
- Values Education**
- National Education
 - Moral & Civic Education
 - Health & Sex Education
 - Environmental Education
 - Service Education
- Others**
- Student Learning Profile
 - Study Tours
 - Sister School Programmes

- School Based Management
- Staff Development & Management
- Staff Appraisal
- Staff Duty & Duty Roster
- Staff Welfare
- New Teacher Induction
- Lesson Substitution, Supply Teachers & Teaching Practice
- School Premises & Resource Management
- School Safety
- Crisis Management
- School Finance
- Admission, Streaming & Class Organization
- Student Welfare, Attendance & Awards Scheme
- Caring of Sick Pupils
- ESDA&APSAO/Statistics Surveys
- Scholarships and Grants
- Tuck Shop & Lunch Box Services
- IT Management
- School Homepage
- WeBSAMS
- Audio-visual Aids
- Time-tabling & Planning
- School Library Services
- School Functions
- School Promotion
- School Publications
- School Records
- Liaising with KC Old Boys' Association
- Liaising with KC PTA